

# ROOMETTES

## BANFIELD STREET FLATS #01-114-01 AND COMBO R4377

### INSTRUCTIONS

1. REMOVE ONE OF THE ROOMS FROM THE CARDSTOCK SHEET WITH A SHARP HOBBY KNIFE. DO NOT CUT THE DOTTED LINES. THEY ARE FOR FOLDING. SAVE THE SCRAP CARDBOARD FOR REFERENCING ROOM LOCATIONS USING THE TEXT PRINTED ON THEM.
2. CAREFULLY BEND THE WALLS, FLOOR AND CEILING INWARD TO CREATE A BOX. DO NOT OVERBEND THEM!
3. BEND AND GLUE THE LEFT AND RIGHT WING TABS UNDER THE FLOOR. USE A POPSICLE STICK OR SIMILAR TOOL TO CAREFULLY APPLY PRESSURE ON THE FLOOR OVER EACH WING TO SET THE GLUE.
4. FLIP THE ROOM OVER AND GLUE THE LEFT AND RIGHT WING TABS OVER THE TOP OF THE CEILING.
5. BEND THE TABS LABELLED "GLUE TO WALL" AT A RIGHT ANGLE OUT OF THE ROOM. SET THE ROOM ASIDE TO DRY.
6. ASSEMBLE THE OTHER ROOMS IN A SIMILAR MANNER.
7. CHECK ALL GLUE JOINTS TO MAKE SURE THEY ARE SOLID BEFORE PROCEEDING. TEST FIT THE ROOMS. IF YOU HAVE ASSEMBLED YOUR BUILDING ACCORDING TO THE MANUFACTURER'S INSTRUCTIONS THEY SHOULD FIT EASILY. IF YOU FIND THEY FIT TOO TIGHT VERTICALLY YOU CAN REMOVE SOME OF THE WALL-MOUNT TAB MATERIAL WITH SCISSORS FOR ADDITIONAL CLEARANCE.
8. TO PREVENT LIGHT LEAKAGE, SPREAD A BIT OF GLUE INTO THE PERFORATED SEAMS ON THE CORNERS OF THE ROOM FROM THE OUTSIDE. THIS WILL ALSO MAKE THE JOINTS STRONGER.
9. YOU CAN MAKE 3-DIMENSIONAL BEDS FOR THE HEADBOARDS BY CUTTING BLOCKS FROM DENSE STYROFOAM AND PAINTING THEM. GLUE THEM TO THE FLOOR.
10. USE YOUR KNIFE TO REMOVE THE CEILING PLUGS AND INSTALL PROVIDED LEDS, FASTENING THEM IN PLACE WITH GOOD QUALITY TAPE OR GLUE.
11. STARTING WITH THE UPPER FLOORS GLUE THE ROOMS TO THE WALLS, BEING CAREFUL NOT TO GET GLUE ON YOUR CLEAR WINDOW MATERIAL.
12. PLUG THE LED HARNESS INTO YOUR WOODLAND SCENICS® JUST PLUG® OR NCE ILLUMINATOR MODULE. SIT BACK AND ENJOY YOUR EFFORTS!

THIS IS NOT A TOY.  
NOT SUITABLE FOR CHILDREN  
UNDER 14 YEARS OF AGE.

# DPM® LANDMARK STRUCTURES® HO SCALE BUILDING KIT



## THREE TOWNHOUSE FLATS (FRONTS ONLY) #11400

### INSTRUCTIONS

Follow the enclosed HO scale General Instructions for #100 and #200 series kits. The General Instructions will refer to the drawings and instructions included with this kit. Read through all instructions before beginning construction on your kit.

#### Flat Fronts

Remove excess flash from top and bottom edge of Flat Fronts with sandpaper or hobby knife. Do not sand into cornice, brick or stone detail. Arrange Flats as desired. If you want Flat Fronts to fit flush together, sand adjoining edges to remove beveling.

#### Suggestions

Use Flats to simulate additional buildings without occupying layout space required for complete buildings.

Place black construction paper behind finished Flats to create the illusion of occupancy.

### ANWEISUNGEN

Folgen Sie der beigefügten allgemeinen Bauanweisungen für HO-Bausätze der Serie #100 sowie #200. Diese allgemeine Bauanweisungen bezieht sich sowohl auf die Montagezeichnung sowie auf die Montageanweisungen, die dem Bausatz beiliegt. Lesen Sie bitte sorgfältig alle zugehörigen Anweisungen vor dem Zusammenbau Ihres Bausatzes gut durch.

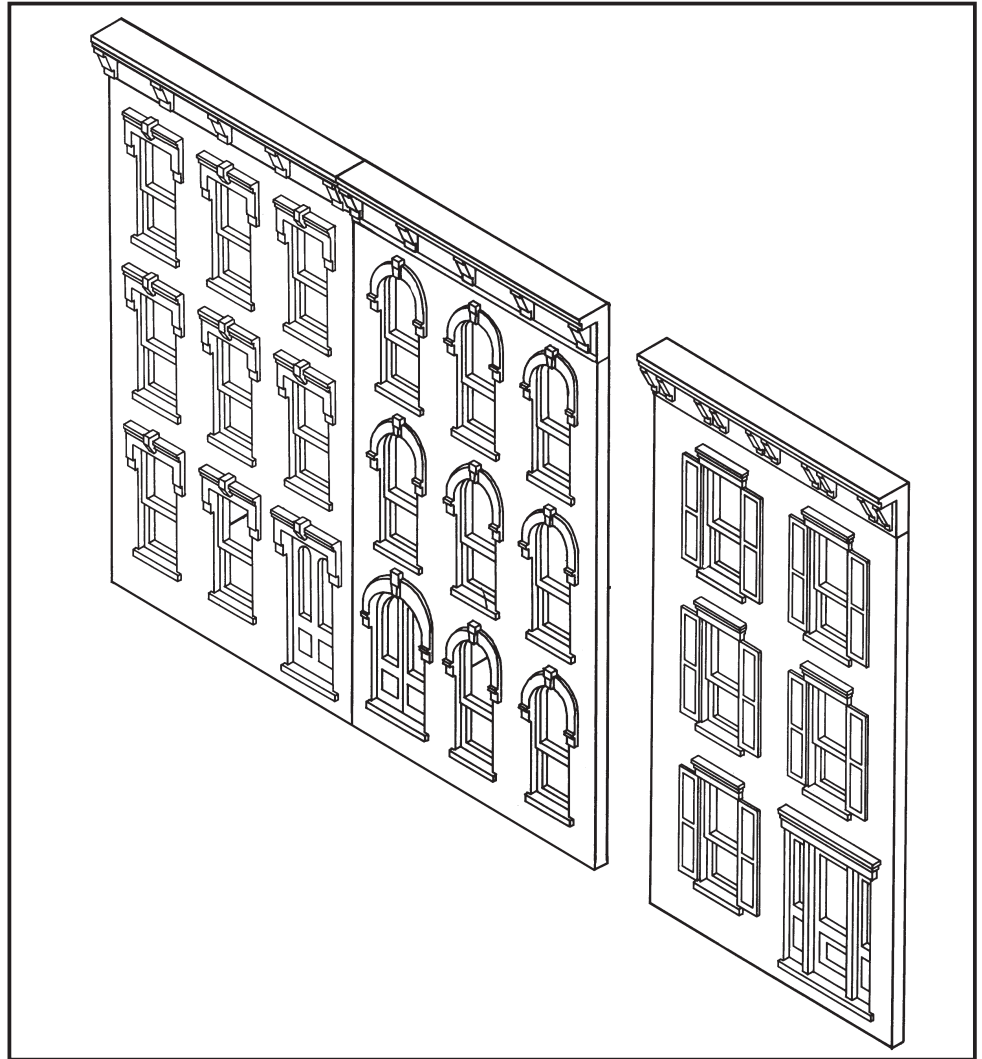
#### Flache Fronten

Entfernen Sie Formgrat mit Sandpapier oder Hobbymesser von der Ober- und Unterkante der Flat Fronts. Nicht in Gesims-, Ziegel- oder Steindetails schleifen. Ordnen Sie die Wohnungen wie gewünscht. Wenn Sie möchten, dass die flachen Fronten bündig zusammenpassen, schleifen Sie die angrenzenden Kanten, um die Abschrägung zu entfernen.

#### Vorschläge

Verwenden Sie Wohnungen, um zusätzliche Gebäude zu simulieren, ohne den für komplette Gebäude erforderlichen Grundriss zu belegen.

Legen Sie schwarzes Konstruktionspapier hinter die fertigen Wohnungen, um die Illusion einer Belegung zu erzeugen.



Create interest on your layout. Add lights to your buildings quickly and easily using the Woodland Scenics® Just Plug® Lighting System. Bereichern Sie Ihre Anlage: Mit dem Woodland Scenics Just Plug Beleuchtungssystem lassen sich Gebäude schnell und einfach beleben.

**CAUTION:** Cutting tools recommended. Use with care. / **ACHTUNG:** Schneidwerkzeuge empfohlen. Mit Vorsicht benutzen.

**MODELING AND CARE INFORMATION** This kit suggests the use of materials that may stain or cause damage. Take care to cover project area and clothing appropriately. Follow recommendations for use and cleanup.

Model making product. Not a toy! Not suitable for children under 14 years! / Produit pour le modélisme. Pas un jouet! Pas adapté aux enfants de moins de 14 ans! / Producto para modelismo. No es un juguete! No adecuado para niños menores de 14 años! / Modellbauartikel. Kein Spielzeug! Nicht geeignet für Kinder unter 14!