

LANDMARK STRUCTURES®

O SCALE
1:48
BUILDING KIT

HARRISON'S HARDWARE PF5891

Model the local hardware store where layout residents can find all they need to keep their homes in tip-top shape and workshops running smooth. The positive alignment system ensures a quick, accurate assembly, and the pre-finished edges reduce preparation time. Kit includes lots of scene-setting accessories, such as dollies, trashcans, snow shovels, a dumpster, signs, light fixtures, a printed interior and many more!

MODELING AND CARE INFORMATION

This kit suggests the use of materials that may stain or cause damage. Take care to cover project area and clothing appropriately. Follow recommendations for use and clean up.

CAUTION

Cutting tools recommended. Use with care.

This item is not a Children's Product and is not intended for use by Children.



WOODLAND SCENICS®

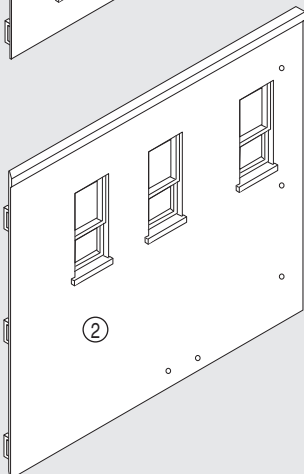
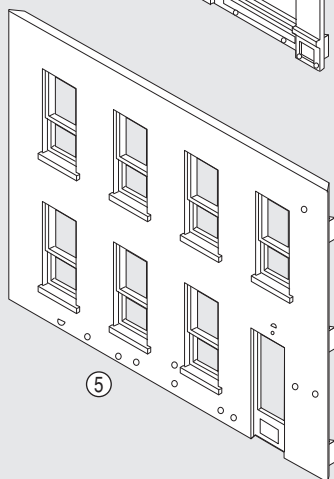
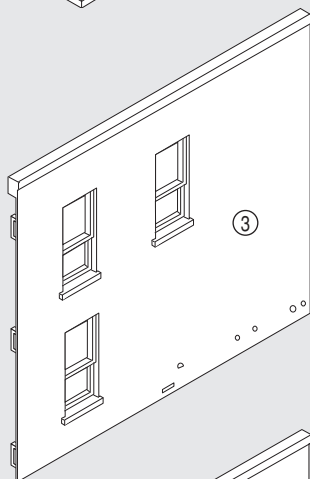
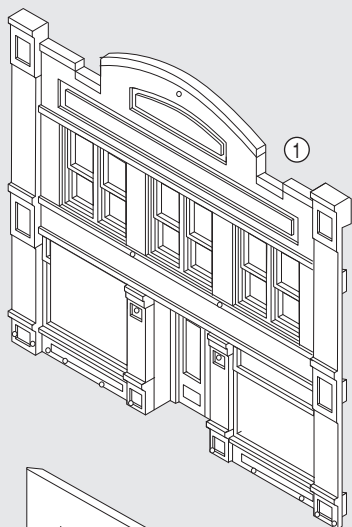
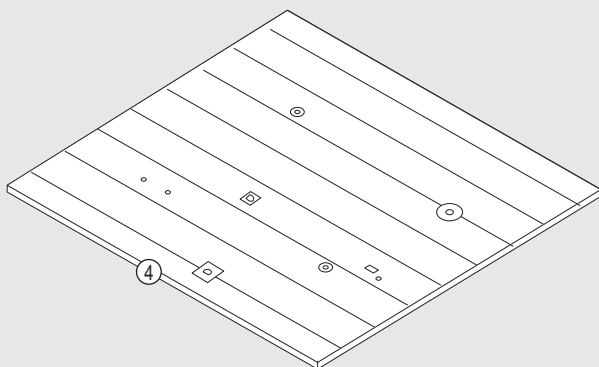
We make every effort to ensure our kits are manufactured complete. However, if this kit is missing a part, please make note of the kit name, number and missing part and contact the Woodland Scenics Sales and Customer Service Department at PO Box 98, Linn Creek, MO 65052, 573-346-5555 or sales@woodlandscenics.com.

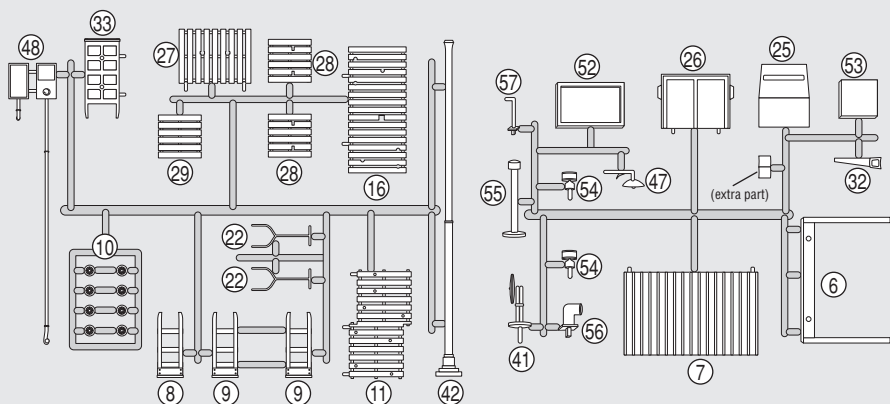
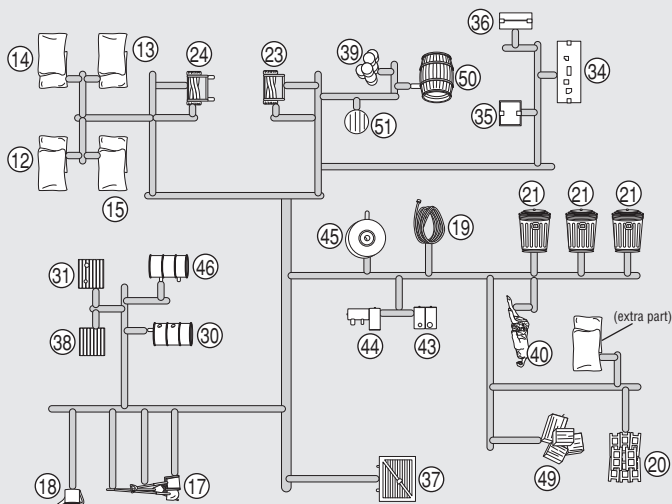
XPf5891INST F5 ©2013 O CO
Printed by a certified Green Printer

HARRISON'S HARDWARE

Building Kit Contents

- Wall and Roof Sections
- Sprues with Details
- Printed Window Material
- Clear Window Material
- Dry Transfer Decals
- Printed Interior
- Blackout Paper





Before You Begin

- Read through instructions.
- Collect additional supplies.
- Check kit contents and verify Details.
- Cover project area with newspaper.

TIP! To assist in assembly, refer to exploded-view illustration on back of box.

Additional Needed Supplies

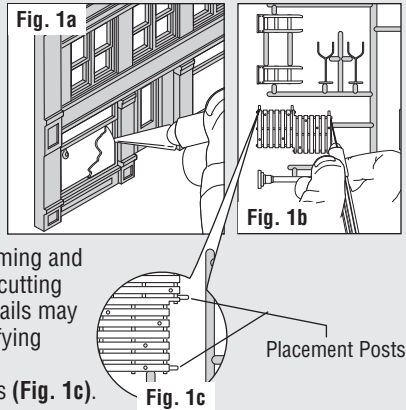
- | | |
|--|---|
| <input type="checkbox"/> Model Glue or Solvent-Based Plastic Cement* | <input type="checkbox"/> Fine-grade Sandpaper |
| <input type="checkbox"/> Paints (acrylic and/or enamel)* | <input type="checkbox"/> Clear Tape |
| <input type="checkbox"/> Primer* | <input type="checkbox"/> Tweezers |
| <input type="checkbox"/> Painting Tools | <input type="checkbox"/> Scissors |
| <input type="checkbox"/> Hobby Knife / Flush Cutting Shears | <input type="checkbox"/> Ruler |
| <input type="checkbox"/> Cyanoacrylate Adhesive (CA glue / super glue) | <input type="checkbox"/> Newspaper |

NOTE: Allow glue to set before moving to the next step. Plastic cement works by dissolving the surface of plastic and welding parts together. Avoid contact with detail on parts.

*Contact your local hobby shop for recommendations.

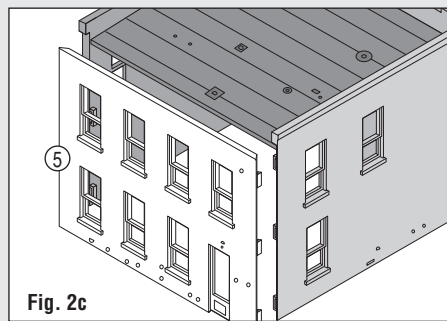
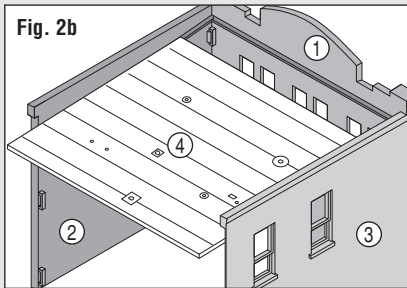
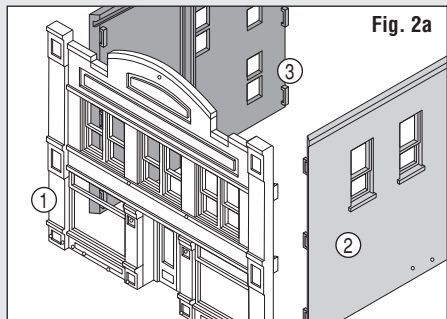
1. Prepare Building Parts and Details

- Remove mold flash from Wall Sections, Roof and Details using a hobby knife and sandpaper (**Fig. 1a**). Make sure grooves in Wall Sections are free of mold debris. Do not remove Details from sprues at this time.
- Wash Wall Sections, Roof and Details in warm, soapy water using a mild detergent. Rinse and let dry.
- Details can be left on sprues or removed for priming and painting. Remove using a hobby knife (or flush cutting shears) and sand off parting lines (**Fig. 1b**). Details may be easier to paint on sprue. It also makes identifying them easier during assembly.
- Do not remove placement posts or installation tabs (**Fig. 1c**).



2. Assemble Building

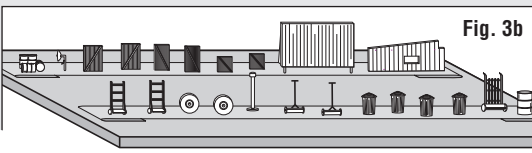
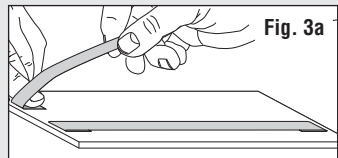
- Align Right Wall ② and Left Wall ③ with Front Wall ① and snap firmly into place (**Fig. 2a**).
- Align Roof ④ with grooves in Walls ② and ③. Slide into place, aligning with groove in Wall ① (**Fig. 2b**). Lighting raceways on underside of Roof and inside of Wall ③ should align.
- Snap Back Wall ⑤ into place, aligning tabs and groove (**Fig. 2c**). Square Walls and Roof, and apply glue along inside seams and onto installation tabs.



3. Prime and Paint

Do not prime or paint placement posts.

- Apply a thin coat of primer and let dry.
- Paint as desired and let dry. See Tips & Techniques on pg. 6 for painting tips and weathering techniques.



TIP! To make priming and painting loose Details easier, secure them to strips of masking tape (sticky side up) attached to a piece of cardboard (**Fig. 3a and 3b**).

4. Install Window Material

Position Printed Window Material on inside of Building. Remove protective film before installation. If clear windows are preferred, use Clear Window Material.

- Align Window Material over corresponding windows on inside of Building. Dab a small amount of glue carefully around edges (Fig. 4a).
- Repeat for each set of window openings.

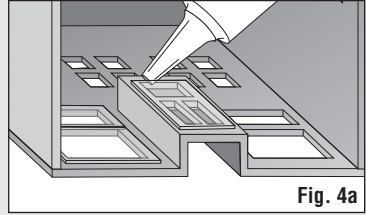


Fig. 4a

5. Apply Dry Transfer Decals

Dry Transfer Decals are included for Sacks (12,13,14,15), Dumpster Front (25), Large Box (34), Small Box (36) and Square Box (35). Before applying, test fit to confirm proper placement.

- Cut out desired Decal. Position in desired location and avoid handling the back. Rub over entire Decal with a burnisher or dull pencil.
- Lift away carrier sheet carefully. If Decal did not transfer completely, let carrier sheet fall back in place and burnish again.
- Place backing paper over Decal and burnish again for maximum adhesion.
- If applying onto textured surface, press Decal into texture with a pencil eraser.

IMPORTANT Assemble and install Details using Cyanoacrylate Adhesive (CA glue / super glue). If Details were left on sprue while painting, remove using a hobby knife (or flush cutting shears). Sand parting lines and touch-up with paint. Details have unique placement posts for predetermined locations. Test fit Details before gluing.

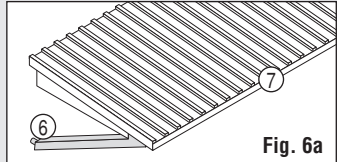


Fig. 6a

6. Preassembly

Awning

- Glue Awning Bracket (6) to Awning (7) (Fig. 6a).

Large Pallet

- Glue Tool Set (17), Watering Can (18), Hose (19), Cinder Blocks (20), Trash Cans x3 (21) to Large Pallet (16) (Fig. 6b).

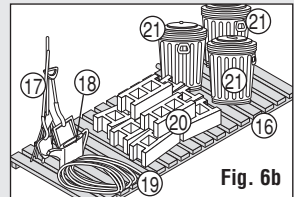


Fig. 6b

Double Pallet

- Glue Sacks (12, 13, 14) and (15) to Double Pallet (11) (Fig. 6c).

Handcart Grouping

- Glue Wheels x6 (10) onto Handcart (8) and Handcarts x2 (9). Glue Handcart Assemblies x2 (9,10) onto Handcart Assembly (8,10) (Fig. 6d).

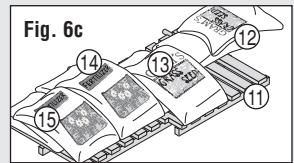


Fig. 6c

Dumpster

- Glue Dumpster Front (25) to Dumpster Frame (26) (Fig. 6e).

Push Mower Grouping

- Glue Push Mower Frames 2x (22) to Wheels/Blades (23) and Wheels/Blades (24). Glue Mower Assembly (22,23) behind Mower Assembly (22,24) (Fig. 6f).

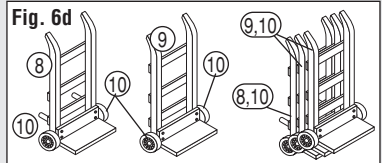


Fig. 6d

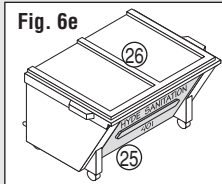


Fig. 6e

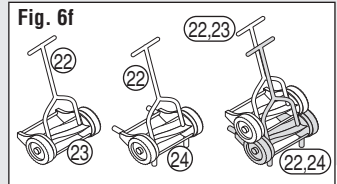


Fig. 6f

6. Preassembly cont.

Large Handcart

- Glue Large Box (34) to Handcart (33). Glue Square Box (35) and Small Box (36) to Box (34). Then, attach Wheels x2 (10) to Handcart (33) (Fig. 6g).

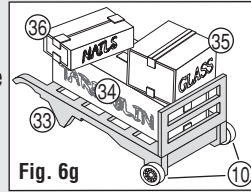
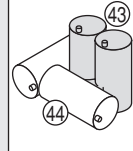


Fig. 6g

Fig. 6h



Cans

- Glue Cans 1 (43), to Cans 2 (44) (Fig. 6h).

Skids Grouping

- Glue Bottom Skid (27), Middle Skids x2 (28) and Top Skid (29). Watch placement, skids should look stepped (Fig. 6i).

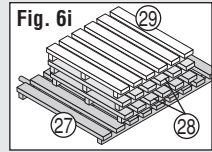


Fig. 6i

Barrel, Crate, Saw

- Glue Square Crate (31) to Fallen Barrel (30). Glue Saw (32) to Square Crate (31) (Fig. 6j).

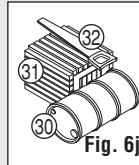


Fig. 6j

Fig. 6k

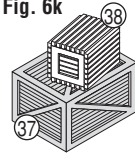
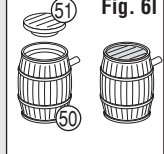


Fig. 6l



Wooden Crate

- Glue Small Wooden Crate (38) to Large Wooden Crate (37) (Fig. 6k).

Barrel

- Glue Barrel Lid (51) to Barrel (50) (Fig. 6l).

7. Install Details on Building

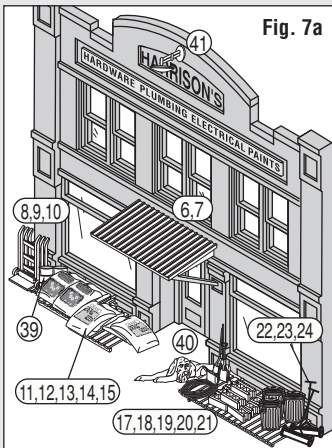


Fig. 7a

Front (Fig. 7a)

Handcart Grouping (8,9,10), Paint Cans (39), Double Pallet Assembly (11,12,13,14,15), Dog (40), Large Pallet Assembly (17,18,19,20,21), Push Mower Grouping (22,23,24), Awning Assembly (6,7), Light (41)

Right Side (Fig. 7b)

Dumpster Assembly (25,26), Drainage (42)

Back (Fig. 7c)

Cans Assembly (43,44), Skids Grouping (27,28,29), Two Tires (45), Barrel (46), Barrel Assembly (30,31,32), Backdoor Light (47), Electric Meter (48)

Left Side (Fig. 7d)

Group of Boxes (49), Barrel Assembly (51,50), Large Handcart Assembly (33,34,35,36), Wooden Crate Assembly (37,38)

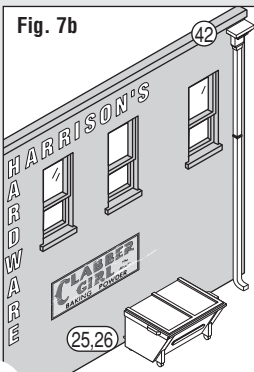


Fig. 7b

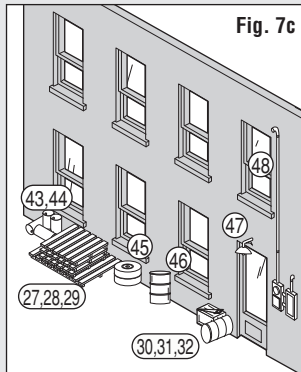


Fig. 7c

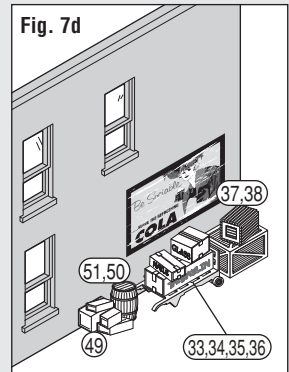


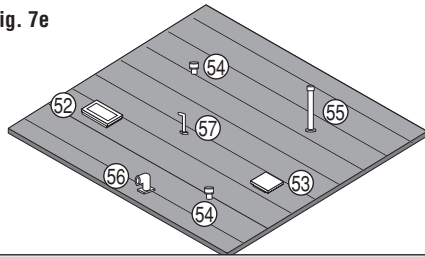
Fig. 7d

7. Install Details cont.

Roof (Fig. 7e)

Large Hatch (52), Small Hatch (53), Vents x2 (54), Pipe Vent (55), Large L-Vent (56), Small L-Vent (57)

Fig. 7e



8. Printed Interior & Blackout Paper

The Printed Interior and Blackout Paper add life and interest to the building and creates the illusion of occupation.

- Fold Printed Insert along score lines. Hold together with clear tape (Fig. 8a).
- Cut two sheets of Blackout Paper, each measuring 10" L x 6" H. Place sheets on top of each other and cut a notch half-way up (Fig. 8b). Assemble and insert into Building diagonally (Fig. 8c).
- Insert Printed Interior into Building, aligning with front windows and bottom of building.
- To hold in place, tape Insert along bottom edge of Front Wall and Blackout Paper to interior of Walls.

OPTION: Use Blackout Paper without the Printed Interior.

Fig. 8a

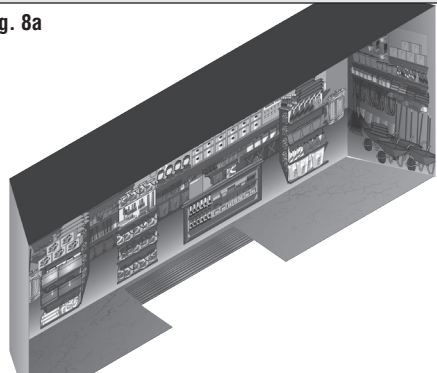


Fig. 8b

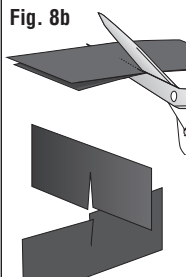
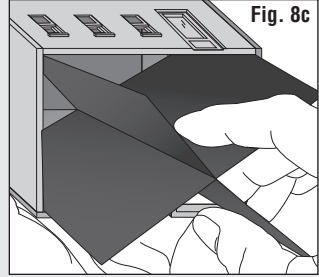


Fig. 8c



Tips and Techniques

Lighting

Harrison's Hardware has a lighting raceway and generic light socket. To reduce glare, paint interior walls and underside of roof a flat, earth-tone shade.

Painting

Airbrush or Hand-brush Use enamel (solvent-based) or acrylic (water-soluble) flat finish paint.

Aerosol Use flat finish spray paint.

Weathering Techniques

Mortar Wash Create the look of brick mortar or add a weathered look (formula follows). Lay building flat so wash spreads evenly. Using a paintbrush, dab on small amounts of Mortar Wash until desired look is achieved. Sponge off excess.

Formula: Mix 1-part acrylic paint (color suggestion: concrete or aged concrete), 12-parts rubbing alcohol, 8-parts water and 1 drop liquid dish soap.

Airbrush Spray thinned flat black paint lightly onto select areas (color suggestion: grimy black). Add more where discoloration occurs naturally (near windows, roof details, etc.).

Chalk Rub a dark color of pastel chalk on sandpaper to create chalk dust (color suggestion: gray, black, brown, etc.). Using a paintbrush, dab chalk dust where discoloration can occur.

Decals Age Decals by scoring and chipping with a hobby knife.

Look for These Other O Scale Landmark Structures Building Kits at Your Local Hobby Shop



**Lubener's General
Store PF5890**



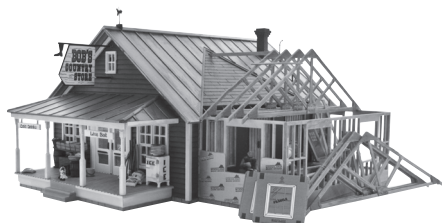
**Corner Emporium
PF5893**



**J.W. Cobbler
PF5892**



**Deuce's Bike Shop
PF5895**



**Country Store
Expansion PF5894**